



强 信
QIANG XIN

强信机械科技(莱州)有限公司

地址: 山东省莱州市城港路街道开明路2099号

电话: 0535-2292507~508

传真: 0535-2230380*2231838

E-mail: qiangxin@strongh.cn

网址: www.strongh.cn

邮编: 261400

STRONG H MACHINERY TECHNOLOGY CO.,LTD.

Add: No.2099 KAI MING RD., CHENGGANG

RESIDENTIAL DISTRICT, LAIZHOU SHANDONG CHINA

Tel: +86-535-2292507~508

Fax: +86-535-2230380*2231838

E-mail: qiangxin@strongh.cn

PC: 261400

公司网址
Company Web



微信公众号
WeChat Official Account



手机扫描二维码, 即可获得相应页面产品的更多资讯!
More information about our products you can scan
QR code with phone!

Automation Sewing Unit For Knitting Clothes

针织自动化缝制单元



目录 INDEX

自动缝下摆机 Automatic bottom hemming machine	P01
自动包缝下摆机 Automatic overlock hem-sewing machine	P02
自动压袖口机 Automatic cuff coverstitch machine	P03
自动拼接领口罗纹机 Automatic stitching ribbed neckline machine	P04
自动拼接下摆罗纹机 Automatic stitching ribbed hem machine.....	P05
自动拼翻袖口罗纹机 Automatic rib cuff stitching & turning machine	P06
自动上罗纹袖口机 Automatic rib cuff installing machine.....	P07
自动单片下摆机 Automatic single piece bottom hemming machine	P08
自动打钮门机 Automatic buttonholing machine	P09
自动钉扣机 Automatic button attaching machine.....	P10
Polo衫自动开门襟机 Automatic Placket Opening Machine for Polo Shirts	P11



做世界级的供应商
Be a world-class supplier

给您 THE BEST QUALITY
FOR YOU
since 1996 最好的品质

STRONG H

关于我们

STRONG H 自1996年成立以来，始终致力于以科技和创新的力量，推动世界缝制机械行业的进步与发展，努力成为缝制机械行业的世界级优秀供应商。现 STRONG H 已行销全球，成为各个国家的渠道商、终端客户的首选。

为适应市场趋势，实现全面发展，公司自2018年开始投入针织自动化设备的设计研发，以缝边工艺解决方案为开发方向，以单序多机省人化、单机多序缝纫自动化、产线半自动化、自动化产线方案服务客户，做人机分离、机器替人等研发改善，现已拥有完整的研发体系，并组建了高效的专业团队。

公司每年扩大研发投入，完善运营体系，导入精益生产，实现产品和服务的无人化、柔性化、智能化、安全节能化、个性化等，成为相关针织终端成衣厂（圆领衫、POLO衫、卫衣等）自动化设备首选及战略合作伙伴。

ABOUT US

Since its establishment in 1996, STRONG H has been committed to promoting the progress and development of the world's sewing machinery industry with technology and innovation, striving to become a world-class excellent supplier in the sewing machinery industry. Currently, STRONG H has been marketed globally and has become the first choice of channel partners and end users in various countries.

To adapt to market trends and achieve comprehensive development, the company has invested in the design and development of knitting automation equipment since 2018, focusing on the development of sewing process solutions, serving customers with single-sequence multi-machine labor-saving, single-machine multi-sequence sewing automation, semi-automatic production line, and automated production line solutions. The company has carried out research and development improvements such as human-machine separation and machine substitution, Set up excellent R&D system and now has a high-efficiency professional team.

The company continuously invests in research and development, improves its operation system, introduces lean production, and realizes the unmanned, flexible, intelligent, safe, energy-saving, and personalized products and services, becoming the preferred choice and strategic partner of related knitted apparel factories (such as round-neck shirts, POLO shirts, hoodies, etc.) for automation machine.

圆领衫/POLO衫自动化缝制单元

Automation Sewing Unit For Round Neck Sweatshirt / Polo

STRONG H

自动单片下摆机
Automatic single piece bottom hemming machine



P08

自动缝下摆机
Automatic bottom hemming machine



P01

自动拼接领口罗纹机
Automatic stitching ribbed neckline machine

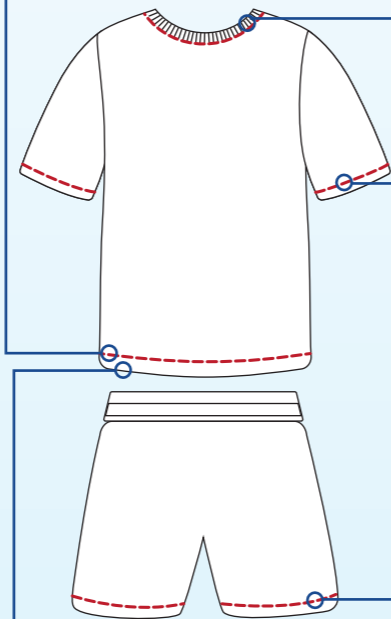
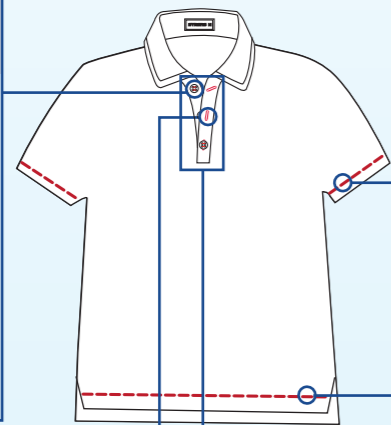


P04

自动打钮门机
Automatic buttonholing machine



P09



自动钉扣机
Automatic button attaching machine



P10

Polo衫自动开门襟机
Automatic Placket Opening Machine for Polo Shirts



P11

自动包缝下摆机
Automatic overlock hem-sewing machine



P02

自动压袖口机
Automatic cuff coverstitch machine



P03

卫衣卫裤自动化缝制单元

Automation Sewing Unit For Sweatshirt & Sweatpants

STRONG H

自动拼接领口罗纹机
Automatic stitching ribbed neckline machine

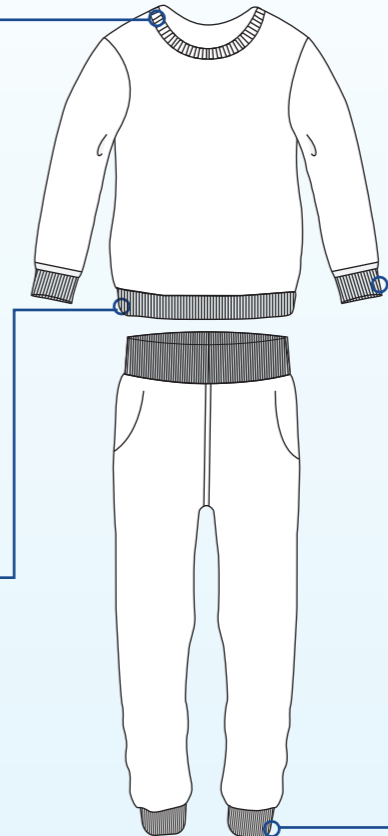


P04

自动拼接下摆罗纹机
Automatic stitching hem ribbed machine



P05



自动拼翻袖口罗纹机
Automatic rib cuff stitching & turning machine



P06

自动上罗纹袖口机
Automatic rib cuff installing machine



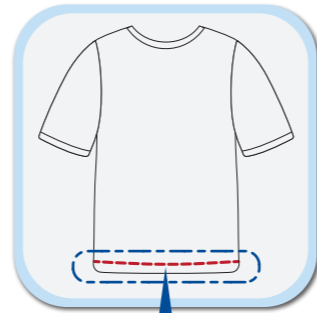
P07



自动缝下摆机

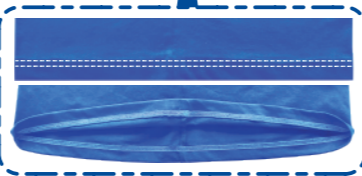
Automatic bottom hemming machine

STRONG H



重线稳定
line overlap
is stable

同向倒骨
same direction
seaming



缝制效果/Sewing effect

适用工序 Apply Process:

针织类圆筒款式下摆工序。
Knitting cylindrical hem coverstitching process.

功能特点 Features:

- 1.一人多机，适用吊挂线，可节省人工。
- 2.不需熟练工，降低操作技能。
- 3.断线自动停机报警。
- 4.具备同向真倒骨及多骨位倒骨功能

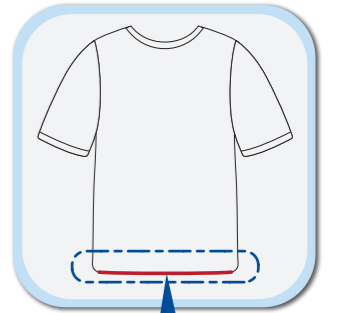
技术参数 Standard parameter

项目/内容 Term/contents	参数范围 Parameter range
适配机型 Adaptive model 可定制 Customized	大和YAMATO: VG3721/VGS3721-UTQ 重机JUKI: MF-7923(H23)/7923D(H25) 宝狮KINGTEX: CXM-2311 飞马PEGASUS: W3662P-35B/W3664P-35B/W2664P-35BC/WT664-35BC/NC
额定电压/频率 Nominal voltage/Frequency	200~240V/50Hz
额定功率 Rated Power	1.5Kw
工作气压 Working gas pressure	0.5~0.6MPa
缝制速度 Sewing Speed	3000~4000RPM
面料卷边程度 Fabric curling degree	小于折边宽度 Less than folding length
下摆类型 Bottom type	平底圆筒下摆 Cylindrical bottom
下摆弧度 Bottom radian	< 20mm
下摆宽度(平量) bottom width	大和款/YAMATO: 320~760mm 飞马款/PEGASUS: 340~760mm
下摆折边高度 Height of bottom folding	15~30mm
布料克重 Material weight	> 120g针织布/Knitting material
适用布料 Suitable fabric	弹力<180%可正常回弹布料/recoverable fabric that can return to its original shape
单件缝制时间/件 CT time/piece	13~18秒/件 (S/piece) [S-4XL]
设备尺寸/装箱尺寸 Dimension of the equipment/package	L1250xW750xH1500(mm)/L1370xW800xH1520(mm)

自动包缝下摆机

Automatic overlock hem-sewing machine

STRONG H



底边缝制稳定
Stable bottom
hem sewing

同向倒骨
same direction
seaming



缝制效果/Sewing effect

适用工序 Apply Process:

卷边、薄料等圆筒型下摆包缝下摆工序；
Overlock hem sewing process for cylindrical
hems such as curled edges and thin materi-
als, etc.

功能特点 Features:

- 1.一人多机，适用吊挂线，可节省人工。
- 2.不需熟练工，降低操作技能。
- 3.断线自动停机报警。
- 4.具备同向真倒骨及多骨位倒骨功能

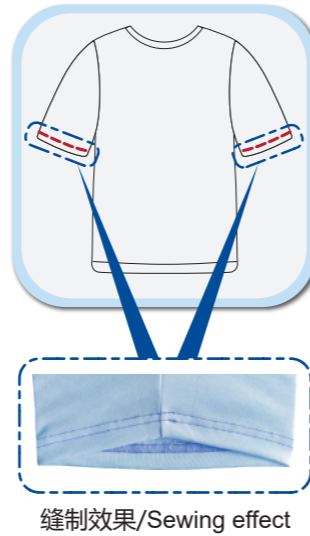
技术参数 Standard parameter

项目/内容 Term/contents	参数范围 Parameter range
适配机型 Adaptive model 可定制 Customized	飞马PEGASUS: EXT5114/MX5114-03 大和YAMATO: AZF-8420
额定电压/频率 Nominal voltage/Frequency	200~240V/50HZ
额定功率 Reted Power	1.5Kw
工作气压 Working gas pressure	0.5~0.6Mpa
缝制速度 Sewing Speed	3000~4000RPM
下摆宽度(平量) Bottom width	360~760mm
下摆弧度 Bottom radian	<20mm
布料卷边程度 Fabric curling degree	小于折边宽度 Less than folding length
适用布料 Suitable fabric	弹力<180%可正常回弹布料/recoverable fabric that can return to its original shape
布料克重 Material weight	>120g针织布Knitting material
单件缝制时间 CT time	15~18秒/件 (S/piece) [S-4XL]
设备尺寸/装箱尺寸 Dimension of the equipment/package	L800xW760xH1600(mm)/L900xW860xH1400(mm)

自动平袖口机

Automatic cuff coverstitch machine

STRONG H



缝制效果/Sewing effect

适用工序 Apply Process:

平袖口、裤口、童装下摆等工序
Coverstitch process for cuffs, leg openings, and children's wear hems, etc.

功能特点 Features:

1. 不需熟练工，降低操作技能。
2. 断线自动停机报警。
3. 具备同向真倒骨及多骨位倒骨功能。
4. 左右袖自动循环倒骨。

1. No need for skilled workers, reducing operating skills.
2. Break stitch automatic stop alarm.
3. With the function of the real same seam direction and multi seams.
4. Left & Right cuff auto circular seam reverted.

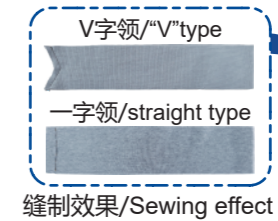
技术参数 Standard parameter

项目/内容 Term/contents	参数范围 Parameter range
适配机型 Adaptive model 可定制 Customized	飞马PEGASUS: W264P 宝狮KINGTEX: CTD9811
额定电压/频率 Nominal voltage/Frequency	200~240V/50Hz
额定功率 Rated Power	1.1Kw
工作气压 Working gas pressure	0.5~0.6Mpa
缝制速度 Sewing Speed	3000~4000r/min
袖口宽度(平量) The width of cuff	160~240mm
折边高度 Height of bottom folding	15~25mm
袖口款式 Cuff type	平袖口 "V" 口高度差小于25mm
布料克重 Material weight	> 120g针织布 > 120g Knitting material
适用布料 Suitable fabric	弹力<180%可正常回弹布料/recoverable fabric that can return to its original shape
单个缝制时间/个 CT time/piece	8~12秒/个(S/piece)
设备尺寸/装箱尺寸 Dimension of the equipment/package	L800xW830xH1580(mm)/L980xW845xH1500(mm)

自动拼接领口罗纹机

Automatic stitching ribbed neckline machine

STRONG H



缝制效果/Sewing effect

适用工序 Apply Process:

圆领衫、卫衣等领口罗纹拼接工序。
Rib stitching process for necklines of crew neck shirts, sweatshirts, etc.

功能特点 Features:

1. 专利平车随动压脚，起缝不掉线。
2. 同样机型的设备可一人同时操作4台。
3. 可与袖口罗纹机和下摆罗纹机组成小单元。
4. 可缝制V型和一型线迹。

1. Patented follow-up presser foot, no thread drop when sewing.
2. One person can operate 4 sets of the same model of equipment at the same time.
3. It can be combined with the cuff rib knitting machine and the hem rib knitting machine to form a small unit.
4. We can sew "V type" and "Straight type".

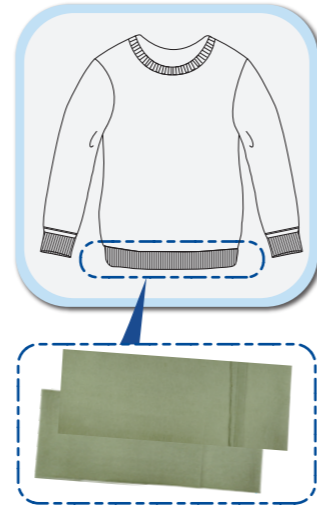
技术参数 Standard parameter

项目/内容 Term/contents	参数范围 Parameter range
适配机型 Adaptive model 可定制 Customized	兄弟BROYHER: S-7300A 重机JUKI: 8000A
额定电压/频率 Nominal voltage/Frequency	200~240V/50Hz
额定功率 Rated Power	1.5Kw
工作气压 Working gas pressure	0.5~0.6Mpa
缝制速度 Sewing Speed	1500~2000r/min
布料类型 Fabric type	1x1、2x2、2x1精棉、化纤罗纹 Fine cotton、Chemical fiber ribbing
止口高度 Faing width	6mm-10mm
布片长度 Fabric piece length	324-700mm
布片宽度 Fabric piece width	29-94mm
缝制线迹 Stitch type	V型&一型 "V" type & straight type
单件缝制时间/件 CT time/PCS	8秒/件(S/PCS)
设备尺寸/装箱尺寸 Dimension of the equipment/package	L1800xW1030xH1600(mm)/L1920xW1140xH1720(mm)

自动拼接下摆罗纹机

Automatic stitching hem ribbed machine

STRONG H



缝制效果/Sewing effect

适用工序 Apply Process:

下摆罗纹拼接缝制工序
Bottom hem in rib type stitching sewing process

自动拼翻袖口罗纹机

Automatic rib cuff stitching & turning machine

STRONG H



缝制/Sewing 翻折/Folding
缝制效果/Sewing effect

适用工序 Apply Process:

袖口罗纹的缝制、翻折工序
Cuff rib stitching and turning process.

功能特点 Features:

1. 一人多机省人化。
2. 选配随动压脚功能，起缝不掉线。
3. 自动上料，料仓自动换料，自动收料。
4. 自动检测布边，自动翻折。

1. One person can operate multiple machines, saving labor.
2. Optional follow-up presser foot function, no thread drop when sewing.
3. Automatic loading, automatic bin change, automatic receiving.
4. Automatic fabric edge detection, automatic folding.

技术参数 Standard parameter

项目/内容 Term/contents	参数范围 Parameter range
适配机型 Adaptive model 可定制 Customized	兄弟BROTHER: S-7300A 重机JUKI: DDL-8000A 单针平车系列 Single needle lockstitch sewing machine series
额定电压/频率 Nominal voltage/Frequency	220~240V/50Hz
额定功率(kw) Rated Power	1.5Kw
工作气压 Working gas pressure	0.5~0.6MPa
缝制速度 Sewing Speed	2000~2500 RPM
罗纹缝制范围(长x宽) Sewing range(L x W)	长(L 750-1500mm)x宽(W 120-250mm)
毛边折边宽度 Selvage width	8~12mm
线迹止口宽度 Seam allowance width	1~2mm
适用布料范围 Applicable fabric range	1*1、2*2、2*1精棉、化纤罗纹 Fine cotton、Chemical fiber ribbing
单件缝制时间/个 CT time/piece	11~13秒/件 (S/piece) 缝制长度 Seam length 750~800mm 缝制宽度 Seam width 180-200mm
设备尺寸/装箱尺寸 Dimension of the equipment/package	L2400xW1400xH1480(mm)/L2500xW1500xH1680(mm)

功能特点 Features:

1. 一人多机，省掉剪线、翻折、收料工序（省人）。
2. 选配随动压脚功能，起缝不掉线。
3. 自动上料，料仓自动换料，自动收料。
4. 单片罗纹自动缝制翻折。

1. One person can operate multiple machines, eliminating the need for thread cutting, folding, and material collection processes (saving labor).
2. Optional follow-up presser foot function, no thread drop when sewing.
3. Automatic loading, automatic bin change, automatic rewinding.
4. Single-piece rib automatic sewing with folding.

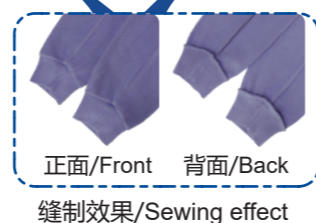
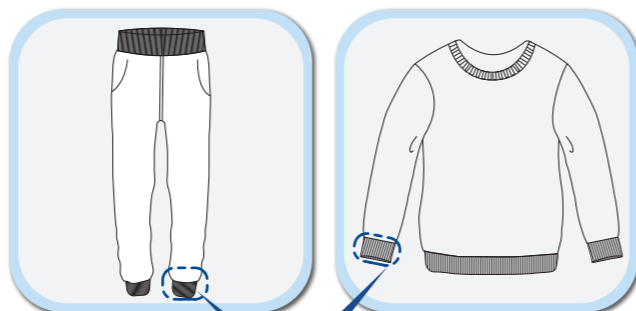
技术参数 Standard parameter

项目/内容 Term/contents	参数范围 Parameter range
适配机型 Adaptive model 可定制 Customized	兄弟BROTHER: S-7300A 重机JUKI: DDL-8000A 单针平车系列 Single needle lockstitch sewing machine series
额定电压/频率 Nominal voltage/Frequency	200~240V/50Hz
额定功率(kw) Rated Power	2Kw
工作气压 Working gas pressure	0.5~0.6MPa
缝制速度 Sewing Speed	2000~2500 RPM
罗纹缝制范围(长x宽) Sewing range(L x W)	长(L 175~340mm)x宽(W 120~250mm)
毛边折边宽度 Selvage width	8~12mm
线迹止口宽度 Seam allowance width	1~2mm
适用布料范围 Applicable fabric range	1*1、2*2、2*1精棉、化纤罗纹 Fine cotton、Chemical fiber ribbing
单件缝制时间/个 CT time/piece	7~9秒/个 (S/piece) 缝制长度 Seam length 180~220mm 缝制宽度 Seam width 150~180mm
设备尺寸/装箱尺寸 Dimension of the equipment/package	L2200xW2000xH1550(mm)/L1750xW1750xH1730(mm)

自动上罗纹袖口机

Automatic rib cuff installing machine

STRONG H



适用工序 Apply Process:

上罗纹袖口、脚口等工序。
Rib cuff and leg band attaching process.

功能特点 Features:

- 1.不需熟练工, 降低操作技能。
- 2.左右袖可循环缝制。
- 3.专利气动纠偏功能。
- 4.断线自动停机报警
- 5.自动识别骨位, 重线准确, 效果美观。

- 1.No need for skilled workers, reducing operating skills.
- 2.Left & Right cuff can be sewn circularly.
- 3."Patent" Pneumatic deviation correction function.
- 4.Break stitch automatic stop alarm.
5. Automatic recognition of seam position, overlap line accurately, beautiful effect.

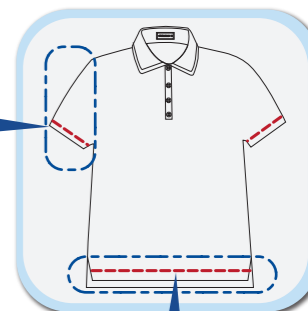
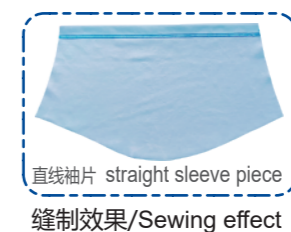
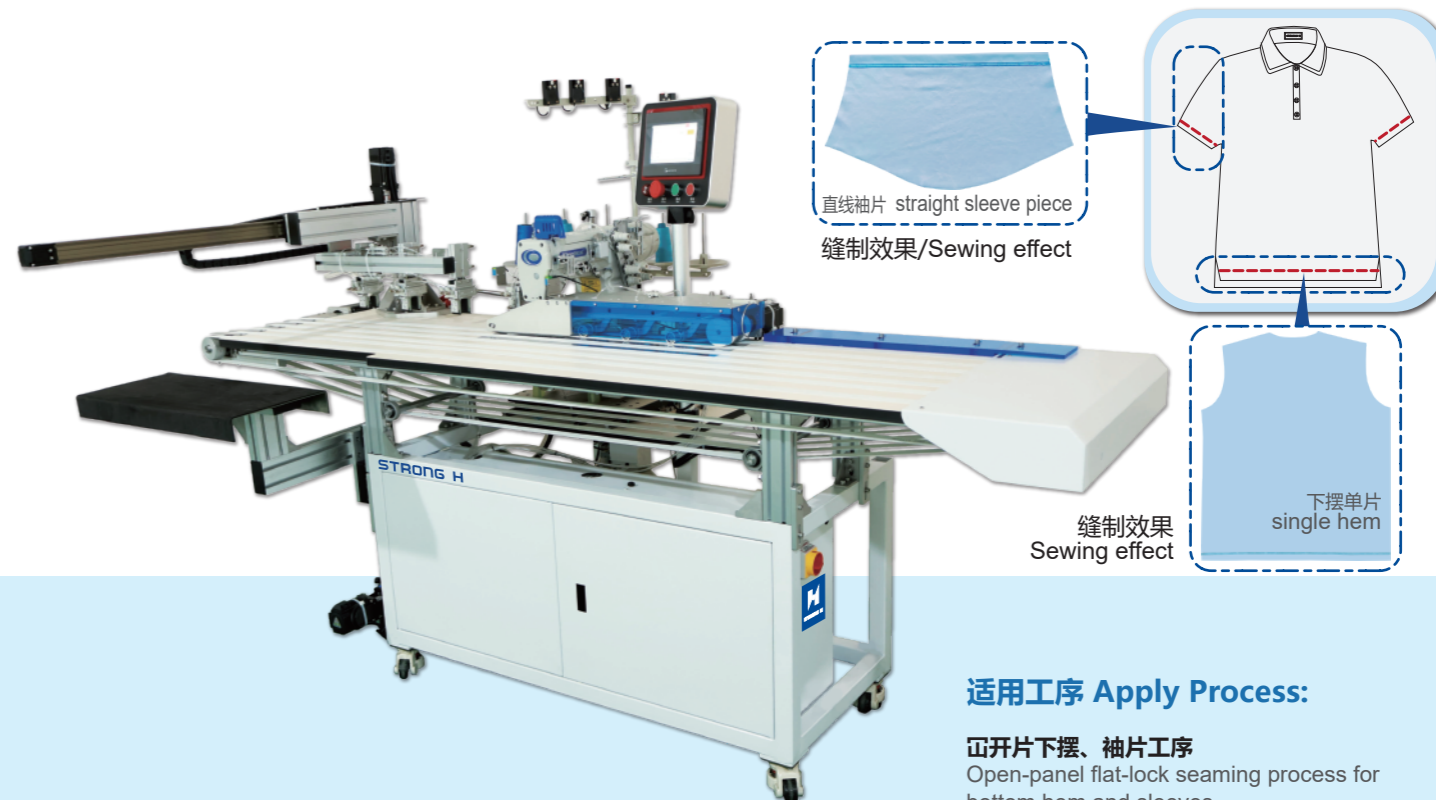
技术参数 Standard parameter

项目/内容 Term/contents	参数范围 Parameter range
适配机型 Adaptive model 可定制 Customized	飞马PEGASUS:EXT5114 大和YAMATO: AZF8420
额定电压/频率 Nominal voltage/Frequency	200~240V/50Hz
额定功率 Rated Power	0.6Kw
工作气压 Working gas pressure	0.5~0.6MPa
缝制速度 Sewing Speed	2500~4500RPM
袖口罗纹宽(半围量) Rib Width	100~160mm
袖口罗纹高(对折量) Rib height	40~100mm
罗纹与袖口宽度差(对折) Rib size VS Cuff width	<50mm
切边大小 Trim size	<5mm
适用布料范围 Applicable fabric range	1*1、2*2、2*1精棉、化纤罗纹 Fine cotton、Chemical fiber ribbing
单件缝制时间/件CT time/PCS	<15秒/个 (S/piece)
设备尺寸/装箱尺寸 Dimension of the equipment/package	L1250xW1240xH1300 (mm)/L1550xW1540xH1300 (mm)

自动单片下摆机

Automatic single piece bottom hemming machine

STRONG H



适用工序 Apply Process:

正开片下摆、袖片工序
Open-panel flat-lock seaming process for bottom hem and sleeves.

功能特点 Features:

- 1.不需熟练工, 降低操作技能。
- 2.不需手工剪线头收料, 节省人工。
- 3.断线自动停机报警。
- 4.自动修边、自动折边、自动抓取收料。
- 5.可选配自动上料机构。

- 1.No need for skilled workers, reducing operating skills.
- 2.No need to manually trim thread ends and collect materials, saving labor.
- 3.Break stitch automatic stop alarm.
4. Automatic trimming, automatic edge folding, automatic grab and receive.
5. Auto feeding mechanism can be selected.

技术参数 Standard parameter

项目/内容 Term/contents	参数范围 Parameter range
适配机型 Adaptive model 可定制 Customized	大和YAMATO: VG3721/VGS3721 重机JUKI: MF-7923(H23)/7923D(H25) 宝狮KINGTEX: CTD9311 飞马PEGASUS: W2664P-35B
额定电压/频率 Nominal voltage/Frequency	200~240V/50Hz
额定功率(kw) Rated Power	2.8Kw
工作气压 Working gas pressure	0.4~0.6MPa
缝制速度 Sewing Speed	2500~3000 RPM
面料卷边程度 Fabric curling degree	小于折边高度 Less than folding height
下摆/袖口类型 Bottom/Cuff type	下摆单片/直线袖片 single hem/straight sleeve piece
下摆宽度 Bottom width	140~760mm
下摆折边高度 Height of bottom folding	18~30mm
单件缝制时间/件 CT time/piece	10~12秒/件 (S/piece)
缝制长度 Seam length 720mm (含收料时长 Including material receiving time)	
设备尺寸/装箱尺寸 Dimension of the equipment/package	L2220xW1700xH1500(mm)/L2370xW1220xH1550(mm)

自动打钮门机

Automatic buttonholing machine

STRONG H



可设置钮门数量2~5个
The number of buttonholes can be set from 2 to 5.

适用工序 Apply Process:

门襟自动打钮门工序。
Automatic placket buttonholing process.

功能特点 Features:

- 1.可适应不同打钮门工艺需求，横纵钮门数量可调整。
- 2.多个钮门可一次缝制完成，代替熟练工。
- 3.结构紧凑，占用空间小，可一人两机，提升效率。
- 4.断线自动停机报警，可选配检测功能。
- 5.更换夹具，可实现男女款切换。

- 1.It can apply for different buttonholing processes required,The buttonholes can be adjusted both horizontally and vertically.
- 2.Multiple buttonholes in a single sewing operation, replacing the skilled workers.
- 3.Compact structure, occupy small space, one person can operate two machines, increase efficiency.
- 4.Break stitch automatic stop alarm, Optional detection function.
- 5.The fixture can be replaced to switch between men's and women's styles.

技术参数 Standard parameter

项目/内容 Term/contents	参数范围 Parameter range
适配机型 Adaptive model 可定制 Customized	重机JUKI: LBH-1790A-S/1790AN 兄弟BROTHER: HE-800B/C
额定电压/频率 Nominal voltage/Frequency	200~240V/50Hz
额定功率(kw) Rated Power	0.7Kw
工作气压 Working gas pressure	0.4~0.6MPa
钮门长度 Button hole length	1/2、7/16、5/16、3/8 (inch)
门襟宽度 Width of pocket	25~35mm
门襟长度 Length of pocket	< 200mm
钮门数量 Number of button hole	2~5个/piece (横竖款/Horizontal and vertical style)
面料种类 Fabric type	针织单、双面布 Single、double side knitting fabric
适用产品类型 Apply product type	POLO衫(长袖、短袖) POLO shirt (long and short sleeves)
单件缝制时间/件 CT time/piece 含检测功能 With detection function	18秒/件 (S/piece) 两个钮门/two buttons 22秒/件 (S/piece) 三个钮门/three buttons
设备尺寸/装箱尺寸 Dimension of the equipment/package	L920xW840xH1400(mm)/L1050xW950xH1500(mm)

自动钉扣机

Automatic button attaching machine

STRONG H



可设置扣子数量2~5个
The number of buttons can be set from 2 to 5.



可选用工业相机款识别LOGO
Optional industrial camera for logo recognition.

适用工序 Apply Process:

门襟自动钉扣工序。
Automatic placket button attaching process.

功能特点 Features:

1. 振动盘自动送料，自动识别LOGO(选配)。
2. 门襟尺寸、钉扣位置自动检测定位(选配)。
3. 一人可同时操作2台设备，提升效率。
4. 多个扣子可一次缝制完成，代替熟练工。
5. 更换夹具，可实现男女款切换。

- 1.The vibration plate automatically feeds materials and Automatic button LOGO recognition.(optional)
- 2.Automatic positioning the placket size and button position.(optional)
- 3.One person can operate 2 machines.
- 4.Multiple buttons in a single sewing operation, replacing the skilled workers.
- 5.The fixture can be replaced to switch between men's and women's styles.

技术参数 Standard parameter

项目/内容 Term/contents	参数范围 Parameter range
适配机型 Adaptive model 可定制 Customized	兄弟BROTHER: BE-438F/H 重机JUKI: LK-1903A/B/C/BN
额定电压/频率 Nominal voltage/Frequency	200~240V/50Hz
额定功率(kw) Rated Power	0.9Kw
工作气压 Working gas pressure	0.5~0.6MPa
缝制范围 Sewing scope	最后1扣到门襟底距离 > 35mm The distance from the last button to the bottom of the placket > 35mm
门襟宽度 Width of pocket	25~35mm
门襟长度 Length of pocket	140~230mm(可定制 Customized)
扣子数量 Number of buttons	2~5个/piece(可设置 to setting)
面料种类 Fabric type	针织单、双面布 Single、double side knitting fabric
适用产品类型 Apply product type	POLO衫(长袖、短袖) POLO shirt (long and short sleeves)
单件缝制时间/件 CT time/piece 含检测功能 With detection function	13秒/件 (S/piece) 两个钮扣/two buttons 18秒/件 (S/piece) 三个钮扣/three buttons
设备尺寸/装箱尺寸 Dimension of the equipment/package	L1010xW880xH1650(mm)/L1050xW950xH1500(mm)

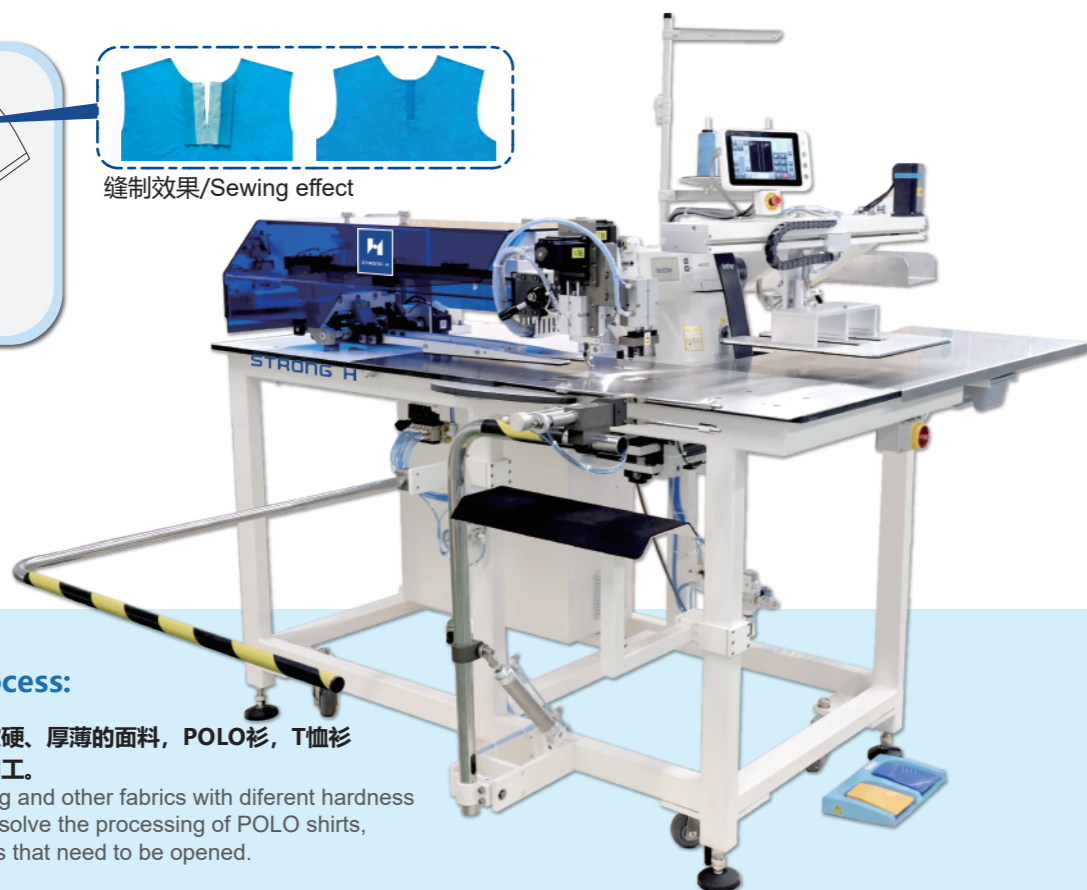
Polo衫自动开门襟机

Automatic Placket Opening Machine for Polo Shirts

STRONG H



缝制效果/Sewing effect



适用工序 Apply Process:

适用于针织、梭织等不同软硬、厚薄的面料，POLO衫，T恤衫等各种需要开门襟的服装加工。

Suitable for knitting, weaving and other fabrics with different hardness and thickness. It can easily solve the processing of POLO shirts, T-shirts and other garments that need to be opened.

功能特点 Features:

1. 不同模式快速切换。
2. 可使用单刀、双刀，实现不同款式的加工。
3. 自动收料功能，自动缝制。
4. 可自动完成缝制、开门襟工序，效率较人工提升5倍以上。
5. 断线自动报警停机。

1. Quick switching between different modes.
2. It can use single or double blades to process different styles.
3. Automatic receiving function, automatic sewing.
4. It can automatically complete the sewing and placket opening processes, with an efficiency increase of more than 5 times compared to manual work.
5. Break stitch automatic stop alarm.

技术参数 Standard parameter

项目/内容 Term/contents	参数范围 Parameter range
适配机型 Adaptive model 可定制 Customized	兄弟BROTHER: S-7300A
额定电压/频率 Nominal voltage/Frequency	200~240V/50HZ
额定功率(kw) Rated Power	0.8KW
工作气压 Working gas pressure	0.5~0.6MPa
缝制速度 Sewing Speed	2000~2500RPM
开门襟宽度Placket width	≤60mm
开门襟长度Placket length	≤320mm
单件缝制时间/件 CT time/piece	<10秒/个(S/piece)
设备尺寸/装箱尺寸 Dimension of the equipment/package	L2300xW1550xH1800(mm)/L1820xW1680xH1650(mm)



省人化缝制工程解决方案
LABOR SAVING SEWING PROJECT SOLUTIONS

装置产品为我司专利产品，仿冒必究 装置产品由于不断更新改善，我司保有产品宣传调整权利
This device belongs to our company's patented products, and copying is not permitted. With the constantly update and improve of this device, our company have rights to advertise products and adjustments.